

Nikon

Browser Software for
Nikon D1 Digital Cameras

Nikon View DX for Windows

Reference Manual

Contents

Overview

Getting Started—Browsing Images

- Browsing Images in Your Camera
- Browsing Compact Flash-Memory Cards
- Browsing Images on Disk
- Displaying Image Files as a List
- Browsing Images in the Windows Explorer

Working with Images

- Selecting Thumbnails
- Viewing Images
- Rotating Thumbnails
- Deleting Images and Folders
- Printing Images
- Refreshing Thumbnails and Folders
- Viewing Image Information
- Copying Images to Disk
- Opening Images in Another Application
- Inserting Images into Documents

Preference

- Selecting the Camera to be Connected

Nikon View Reference

- The Menu Bar
- The Toolbar
- The Right-Button Menus

Trademark Information

IBM and IBM PC/AT are registered trademarks of International Business Machines Corporation.

Windows and MS-Windows are trademarks of Microsoft corporation. Internet Explorer is a product of Microsoft corporation.

i486 and Pentium are trademarks of Intel Corporation.

Adobe is a registered trademark, and Photoshop is trademark, of Adobe Systems Inc.

Internet is a trademark of Digital Equipment Corporation.

Netscape and Netscape Navigator are registered trademarks of Netscape Communications Corporation.

CompactFlash is a trademark of SanDisk Corporation.

All other brand or product names mentioned in this manual are the trademarks or registered trademarks of their respective holders.

Notices

Concerning the Manuals Provided with This Product

- Reproduction, in whole or in part, of any of the manuals provided with your Nikon product requires prior permission from Nikon.
- The information contained in these manuals is subject to change without notice.
- While Nikon has made every effort to produce perfect manuals, we appreciate any opportunity for improvement. Should you find any mistakes, we would be grateful if you were to kindly let us know. The address of Nikon's representative in your area is provided separately.

Disclaimer of Liability

- Nikon does not accept liability for damages resulting from the use of this product.



Do not play the installer or reference CD-ROMs provided with this product on an audio CD player or other device not intended for CD-ROMs. Playing the CD-ROM on an audio CD player could damage the speakers or result in hearing loss.

Welcome to **Nikon View DX for Windows** (below, **Nikon View**), a browser program for the Nikon D1 digital camera. The Nikon View camera driver and browser allow rapid, easy access to camera image files when the camera is connected to a computer. With **Nikon View**, the camera functions as one of your computer's drives, making it possible to apply standard Windows operations to the image files in the camera's memory. Once you have installed **Nikon View** and mastered its simple operations, you'll be able to distribute your digital photographs by disk or electronic mail, or include them in your home page and other documents you create for business or personal use.

Nikon View's principal features are listed below.

- a camera driver for the Nikon D1 digital camera, which allows you to connect your camera to a computer and access its memory in much the same way as you would an ordinary disk drive
- a browser function that makes it possible to preview at a glance all the images stored in your camera's memory, and to select items for editing, deletion, or transfer to disk
- support for OLE 2.0 Drag-and-Drop, making it easy to copy images to disk, open them in other applications, or insert them in documents

- simple operation featuring one-touch toolbars and menus
- images can be opened in any application that supports JPEG or TIFF for retouching or to be saved in another format, allowing you to use images as wallpaper for your desktop or distribute them by electronic mail using other Windows applications
- if you have a compact flash-memory reader or a PCMCIA card slot and card adapter, the digital camera's compact flash-memory cards can be browsed even when not inserted in the camera
- files containing raw image data from the CCD in **Nikon Electronic Image Format** (NEF) are displayed as thumbnail images; NEF files can be opened for editing in **Nikon Capture** (sold separately) simply by double-clicking on the thumbnails



This manual will guide you, step-by-step, through the process of using *Nikon View* with your digital camera. For details on *Nikon View* installation and system requirements, refer to the "*Quick Start Guide*."

Contents of This Manual

The contents of each chapter are outlined below.

Overview

Describes *Nikon View*'s features and outlines the contents of this manual.

Getting Started—Browsing Images

Introduces basic techniques for browsing images with *Nikon View*.

Working with Images

Details the process of viewing images, opening them in other applications, and saving them to disk.

Preference

Explains how to select a camera for browsing.


Nikon View Reference

A handy reference guide to *Nikon View*'s menu and tool bars.

To Users of Windows 95 and Windows NT 4.0

The illustrations and explanations in this manual are for Windows 98. Display and operation may differ under Windows NT 4.0, Windows 95, or when Active Desktop is used with Windows 95. Refer to the manuals provided with your operating system.

On Symbols in This Manual

The  symbols in this manual signify the need for caution when using the product. These indications are placed in sections that should be read before operation to prevent damage to the product.

Working Knowledge

This manual assumes a basic understanding of common Windows operations. If you are in doubt about the meaning of terms used here, refer to your Windows manual.

Getting Started—Browsing Images

Once you have installed the **Nikon View** software as described in the “**Quick Start Guide**,” **Nikon View** allows you to use the camera’s memory in much the same way that you would use any other drive. This chapter describes how to browse the images in the camera’s memory, compact flash-memory cards, and your computer disk. Check that the computer and the digital camera have been connected as described in the documentation provided with the camera, and then carry out the following steps.

Browsing Images in Your Camera

You can use **Nikon View** to browse the images stored in your camera and display them as thumbnails.

Follow these steps to view images stored in your digital camera’s memory:

- 1 Insert a compact flash-memory card into the camera, turn the camera on, and select “PC” as the operating mode. The Digital Camera window will open automatically to display a list of folders containing images that have already been recorded.

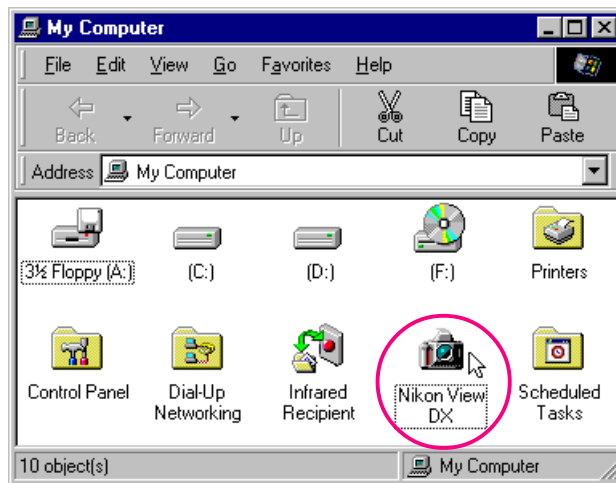
Tips

Nikon View supports one camera, attached to an IEEE 1394 port. It does not support multiple connected cameras or port-extension boards.

The camera will not function as a network drive. Consequently, the **Nikon View DX** icon will not be visible to other computers.

Note: If you close the Digital Camera window, you can open it again by following these steps:

After turning on your computer, double-click the **Nikon View DX** icon in the My Computer window.



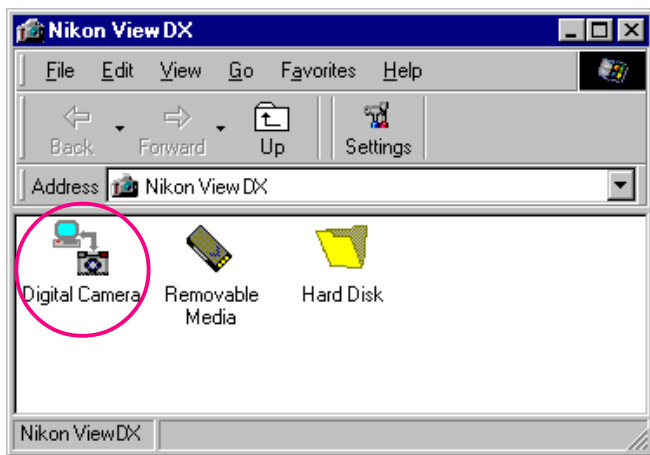
The Nikon View DX window will open on the Desktop.

Note

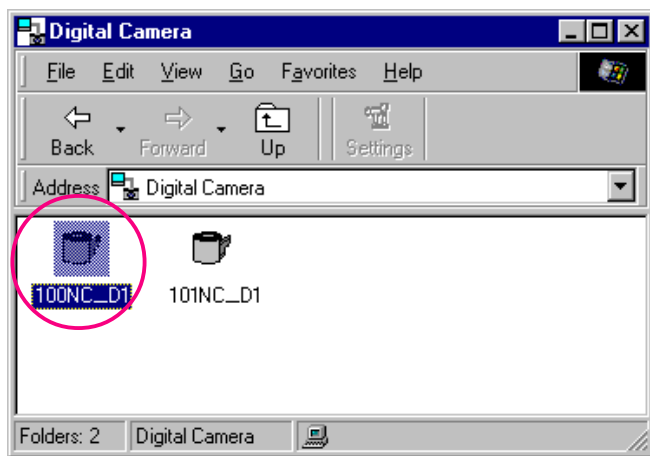
It is recommended that the camera be powered by the EH-4 AC adapter (available separately) when you are using a Nikon D1 digital camera with **Nikon View DX**. When using an EN-4 battery pack, be aware that leaving the camera connected when the battery is exhausted may shorten battery life. Should the battery become exhausted, insert a fully charged spare battery without delay or disconnect the camera from the computer. The amount of charge remaining is shown by the battery indicator in the control panel on top of the camera (see the D1 *User’s Manual* for more information).



Double-click the **Digital Camera** icon.



Folders in the camera's memory are represented by an icon showing a roll of film.



The Digital Camera window will close automatically if you do any of the following:

- Turn the camera off
- Let the camera enter sleep mode
- Remove the compact flash-memory card from the camera
- Set the camera to any mode other than "PC"

✓ Caution: Do not disconnect the camera while data are being transferred to or from the computer, as otherwise the product could be damaged.

Reopening the window

The Digital Camera window will reopen automatically if you do any of the following.

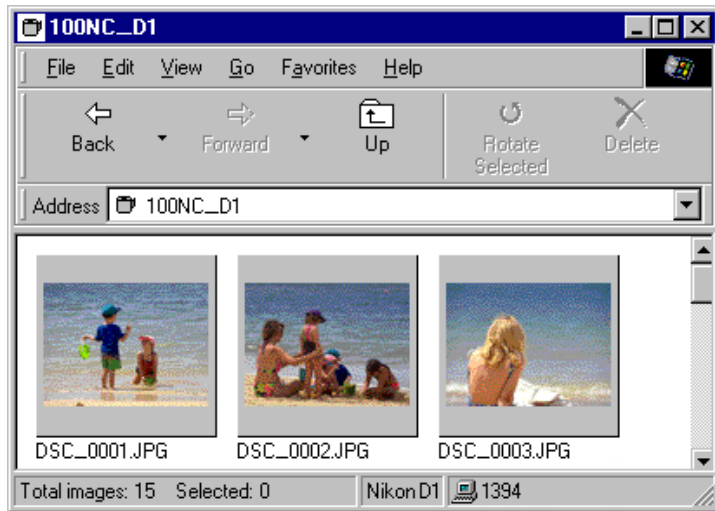
- Turn the camera off and then on
- Wake the camera up by pressing the shutter-release button half way
- Remove and reinsert the memory card
- Return the camera to "PC" mode after switching to another mode

Folder Names

When displayed in *Nikon View*, folders created with the camera are prefixed by a three digit folder number. Thus the default folder is displayed as "100NC_D1." Each folder can hold up to 999 images. If this number is exceeded, the camera will create a new folder with the same name but a different prefix (e.g., "100NC_D1").



- 2 Double-click the folder icon. The images in the selected folder will appear as thumbnail images.



You can then view each thumbnail at full resolution, or print, delete, or copy it. See the following chapter for details.

Tip

The camera's memory is treated as write-protected when browsing in *Nikon View*. Files cannot be copied from other folders to the browsing window, nor can files be saved to the camera after editing in another application. The file names displayed in the browsing window cannot be changed. Should you wish to change a file name, do so after copying the image to disk.

Connection error

If the computer is unable to establish a connection with the camera, the following dialog box will appear.



After clicking **OK** to close the dialog box, check to be sure that:

- the camera is correctly connected to the computer
- the camera is on
- the camera is not in sleep mode
- the camera is set to "PC" mode
- the IEEE 1394 cable is connected correctly as described in the documentation provided with the computer and the camera
- no other hardware is connected to the IEEE 1394 port
- the camera's battery is inserted correctly
- the battery is not exhausted

If using an AC adapter, check that the adapter is connected correctly.

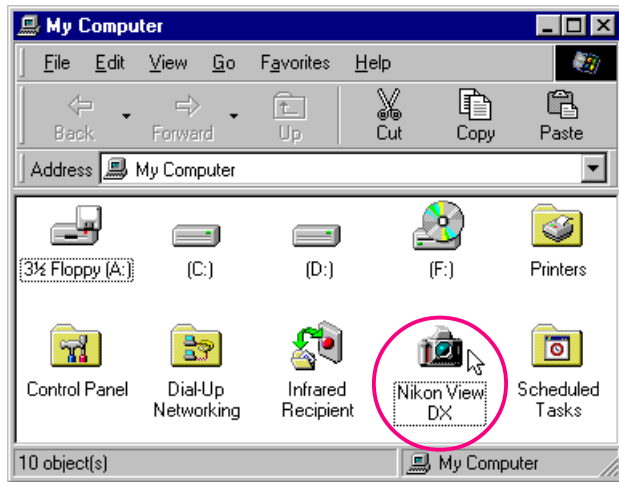
If you have previously installed *Nikon View* software for a camera in the Nikon CoolPix series, choose the proper camera type as described in "Selecting the Camera to be Connected."

Browsing Compact Flash-Memory Cards

If your camera has a Type II PCMCIA card drive, you can read compact flash memory cards using a flash memory adapter (available separately from Nikon), or by using a compact flash card-reader. If a card containing images taken with a D1 or CoolPix digital camera is inserted in either device, you can browse its contents using *Nikon View*.

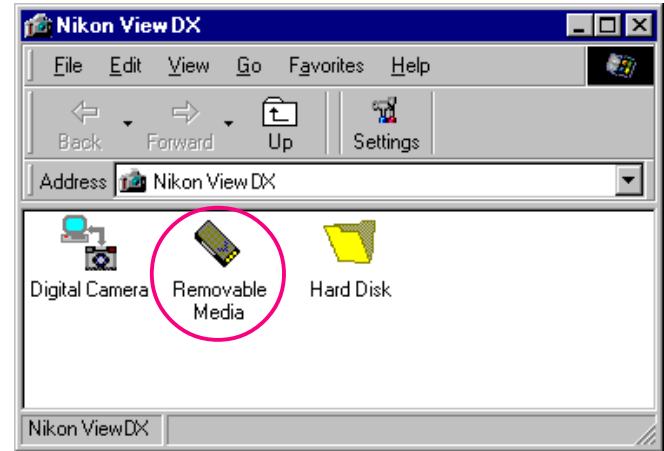
Follow these steps to view images stored on a flash-memory card:

1 Double-click the **Nikon View DX** icon in the My Computer window.

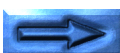
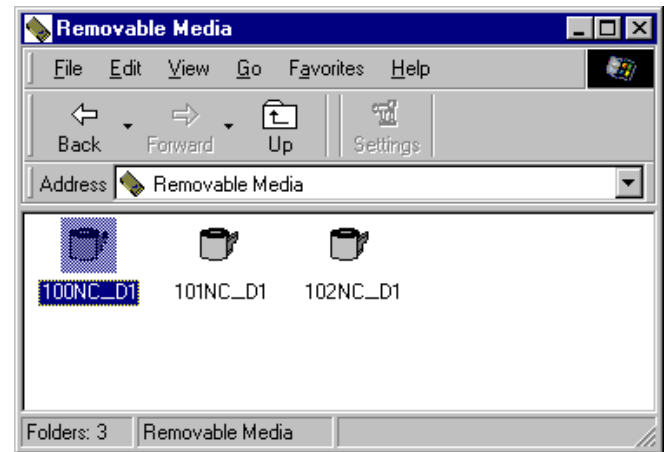


The Nikon View DX window will open.

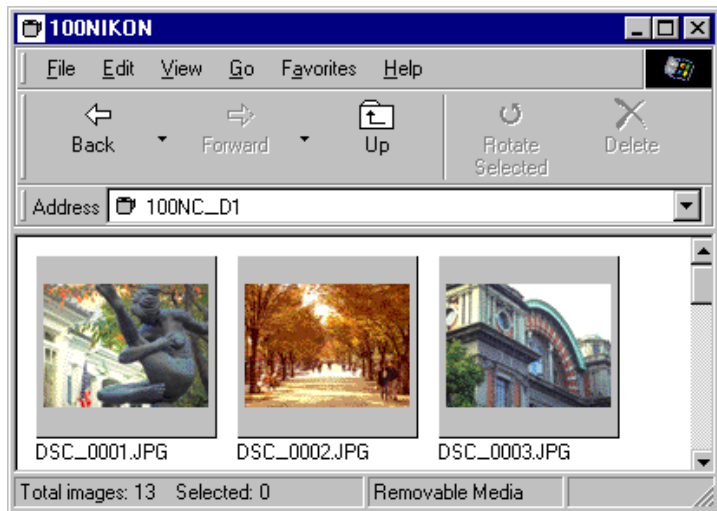
2 Double-click the **Removable Media** icon.



Folders in the card are represented by an icon showing a roll of film.



- 3 Double-click the folder icon. The images in the selected folder will appear as thumbnail images.



You can then view each thumbnail at full resolution, or print, delete, or copy it. See the following chapter for details.

Tip

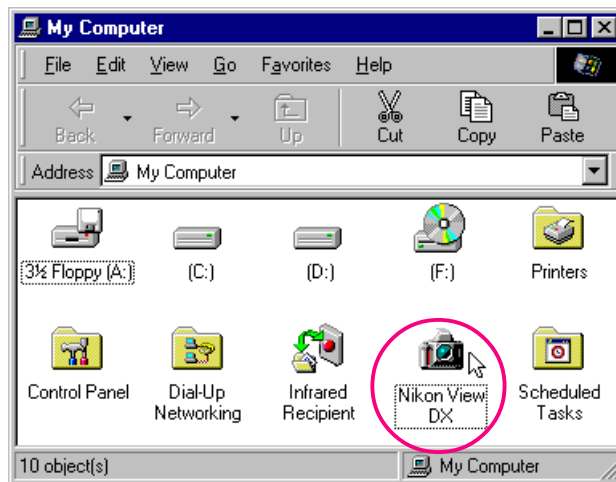
Nikon View automatically detects the drive containing the flash-memory card. When more than two drives are mounted (PC Card slot or a compact flash-memory card reader), *Nikon View* selects one containing a flash memory card. To change drives, select **Hard Disk** in the Nikon View window, and use the **Select Folder** command to select the desired drive.

Browsing Images on Disk

Nikon View can be used to browse images on disk even when the camera is not connected.

Follow these steps to view images on disk:

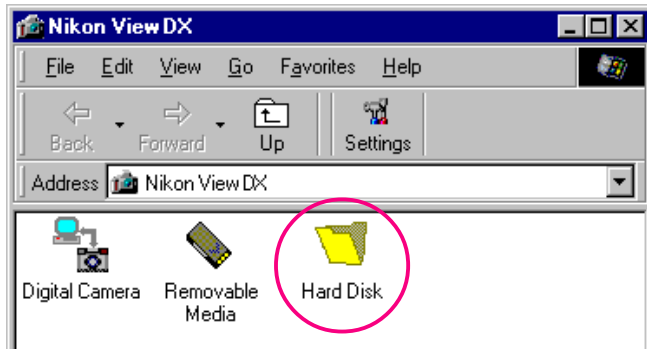
- 1 Double-click the **Nikon View DX** icon in the My Computer window.



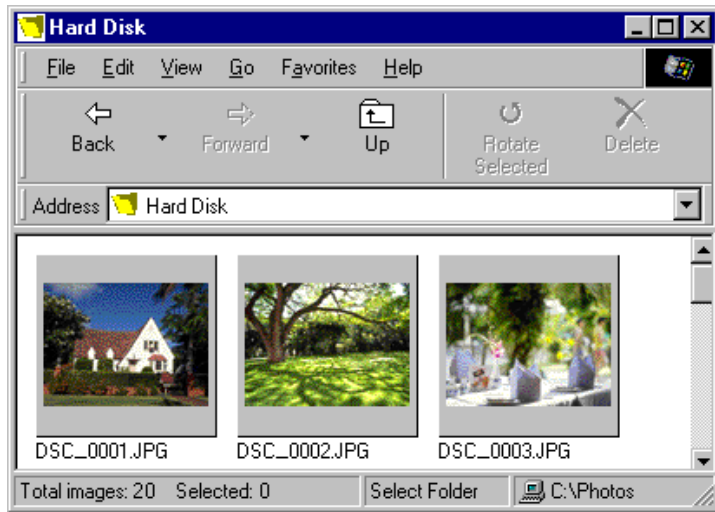
The Nikon View DX window will open.



2 Double-click the **Hard Disk** icon.

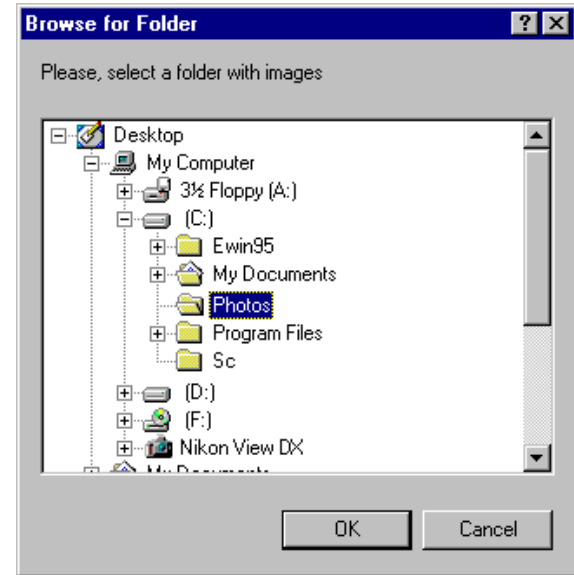


You can browse images previously viewed. The images will be shown as thumbnail previews.



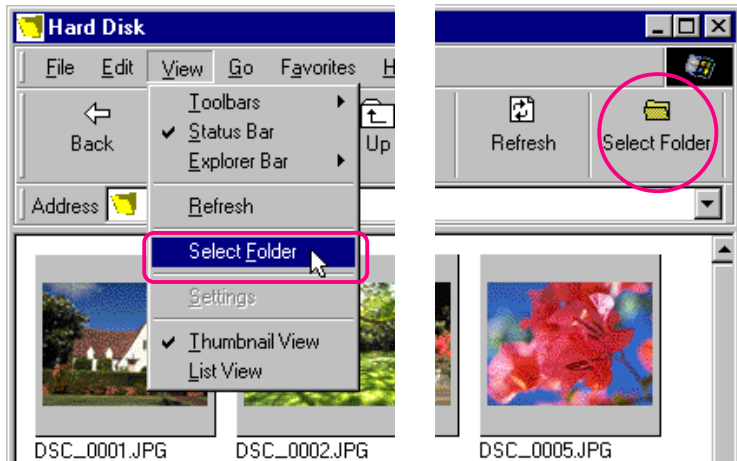
You can then view each thumbnail at full resolution, or print, delete, or copy it. See the following chapter for details.

If you have yet to view any images using *Nikon View*, the Browse for Folder dialog box will appear when you double-click the **Hard Disk** icon. Select the folder that you want to browse, and click **OK**. The images in the selected folder will appear in the browser window.



Browsing images in another folder...

To browse images in another folder, choose **Select Folder** from the **View** menu, or click the **Select Folder** button in the tool bar. If the button is hidden, enlarge the window to bring it into view.

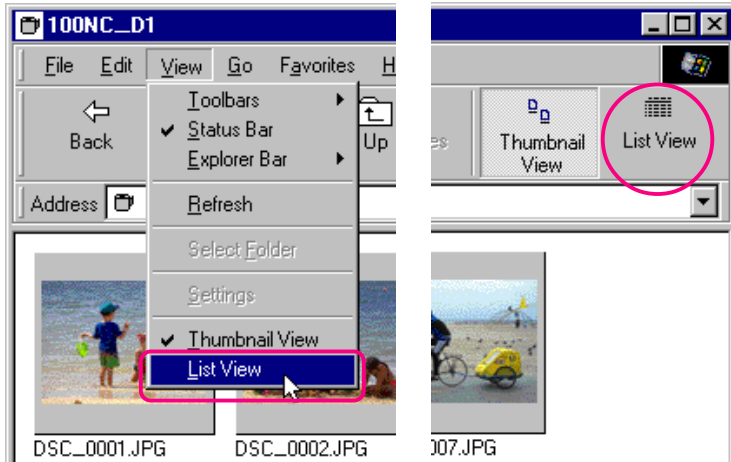


When the Browse for Folder dialog box appears, select the folder that you want to browse.

Short-cut: Click the right mouse button in an empty area of the window and choose **Select Folder** from the right-button menu.

Displaying Image Files as a List

To view information on the image's date of recording, select **List View** from the **View** menu or click the **List View** button in the toolbar for a list-style display. If the button is hidden, enlarge the window to bring it into view.

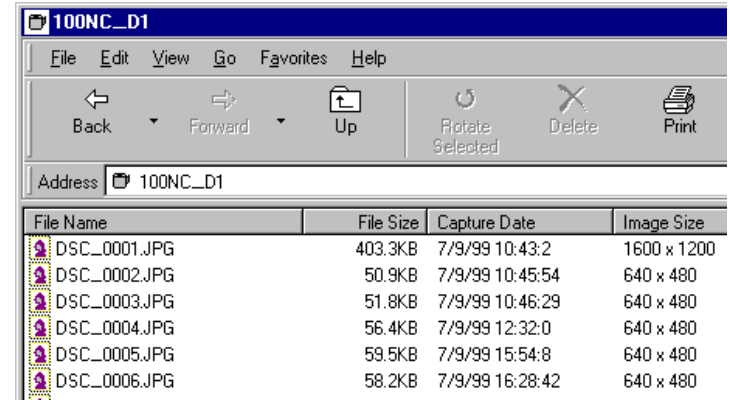


Short-cut: Click the right mouse button in an empty area of the window and choose **List View** from the right-button menu.

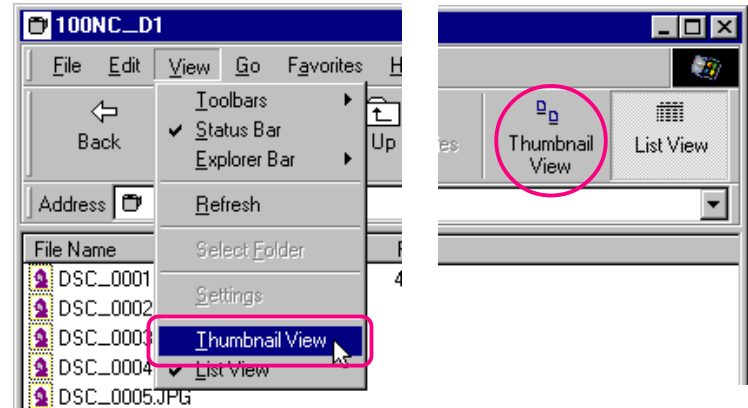
Tip

Depending on the resolution of your display, the tool buttons at the right of the toolbar may not be visible, even when you maximize the image to fill the screen. In that case, open the **Toolbars** submenu from the **View** menu and select **Text Labels** to change to small tool buttons without text labels.

The list-style display is shown below.



To view the images as thumbnail previews once more, select **Thumbnail View** from the **View** menu or click the **Thumbnail View** button.

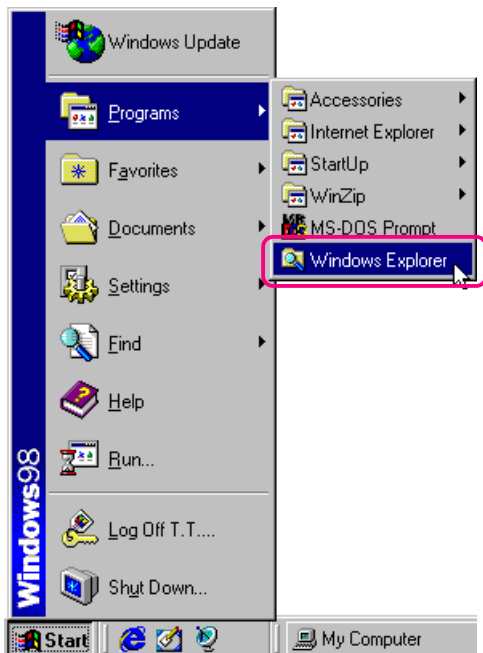


Short-cut: Click the right mouse button in an empty area of the window and choose **Thumbnail View** from the right-button menu.

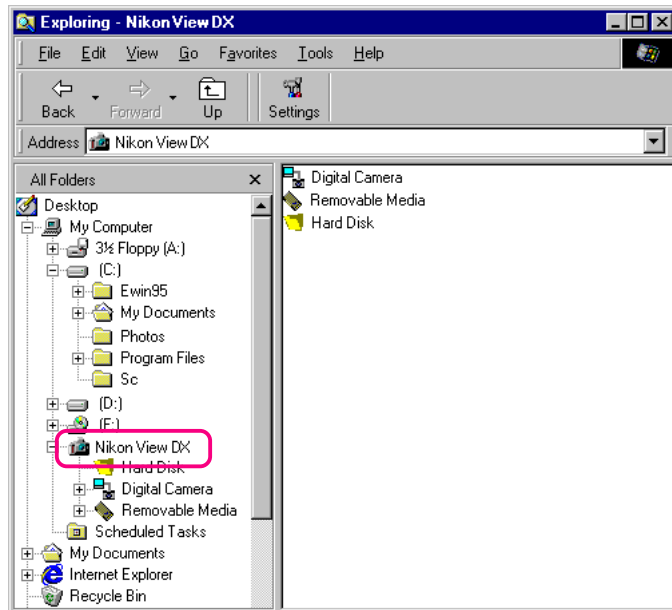
Browsing Images in *Windows Explorer*

With *Nikon View* installed, you can use *Windows Explorer* to browse images saved in the camera.

Click the **Start** button in the taskbar and select **Windows Explorer** from the **Programs** sub-menu.

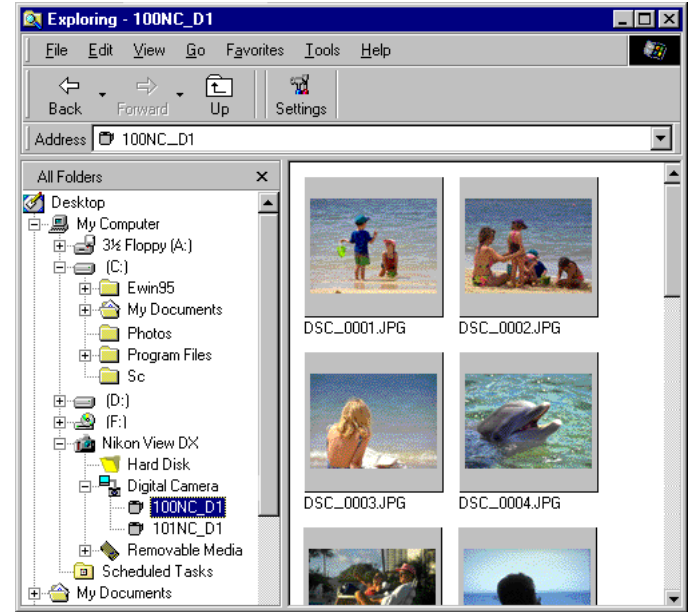
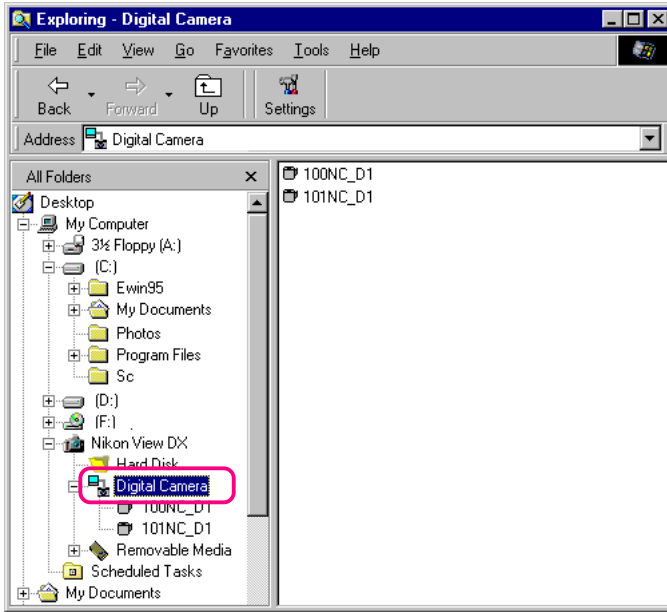


Select **Nikon View DX** from the list of folders shown under **My Computer** in the Explorer to display the **Digital Camera**, **Removable Media**, and **Hard Disk** icons.



Folders in the camera's memory can be displayed by clicking the **Digital Camera** icon.

Images in the camera's memory can be browsed by clicking the icon for the desired folder.



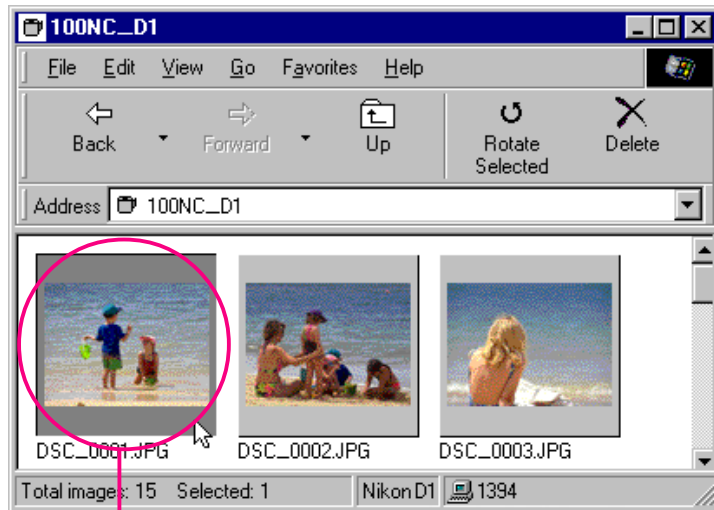
You can also use these commands to browse the images in compact flash-memory cards, and your computer disk. Operating procedures are the same as those for browsing in My Computer. See the preceding section for details.

Working with Images

When browsing images with **Nikon View**, you can use the same standard operations that you would with other files on Windows. This chapter describes how to preview images, copy them to disk, and open them for editing in other applications.

Selecting Thumbnails

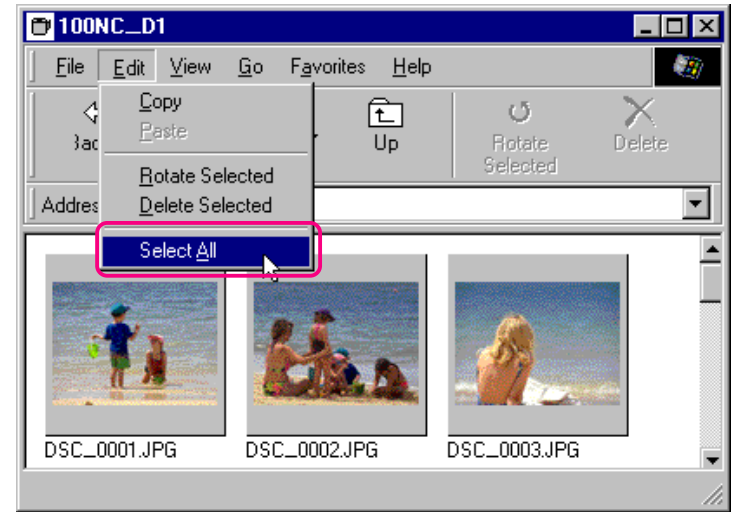
To copy, print, or delete an image, select the desired thumbnail by clicking it once. Selected thumbnails are indicated by a dark gray border.



Selected thumbnail

To select multiple thumbnails, hold down the **Ctrl** key on the keyboard while clicking each image in turn.

To select all thumbnails, select **Select All** from the **Edit** menu.



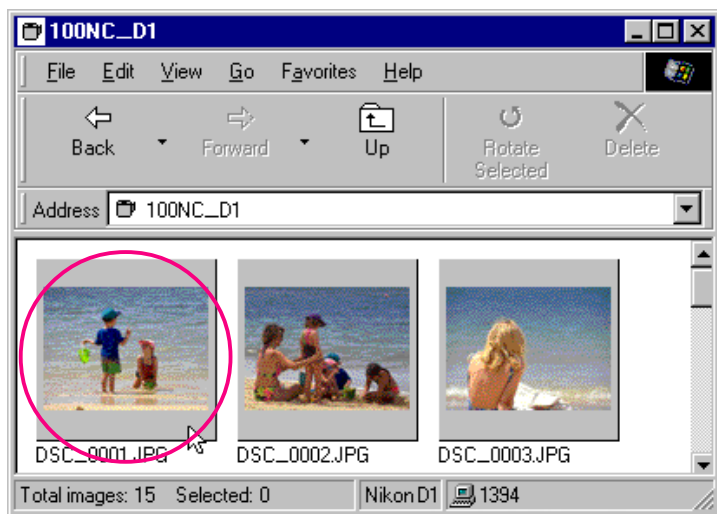
Short-cut: Press **A** on the keyboard while holding down the **Ctrl** key, or click the right mouse button in an empty area of the window and choose **Select All** from the right-button menu.

Viewing Images

Images can be viewed at full resolution in image windows. Images in image windows can be rotated and zoomed in or out using the controls on the image window tool bar. Any number of image windows may be open at one time.

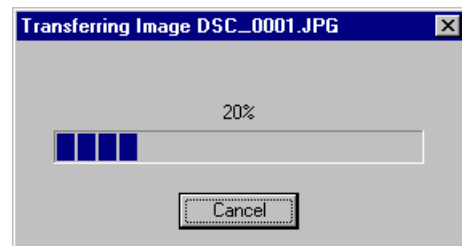
Opening images in image windows

Double-click the thumbnail you wish to view.



Short-cut: Select the thumbnail with the right mouse button and choose **Preview** from the right-button menu.

While image data are being copied to the image window, the following indicator is displayed. Click **Cancel** to abort the operation.



Once transfer is complete, the image will be opened in an image window.





Note: Nikon View cannot be used to open NEF images (.nef). You will need to use Nikon Capture (sold separately) to open NEF images



Rotating images and zooming images in and out

Images in the image window can be rotated or zoomed in or out using the buttons in the image window tool bar.

 **Rotate** The image view is rotated ninety degrees to the left each time this button is clicked

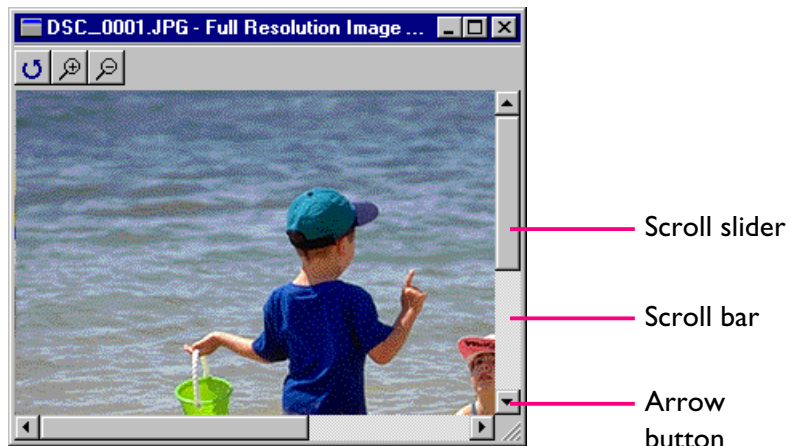
 **Zoom In** Click to zoom the image view in


 **Zoom Out** Click to zoom the image view out

Note: *Rotation and zoom operations performed in the image window are not reflected in the thumbnail images in the browsing window.*

Scrolling and resizing the image window

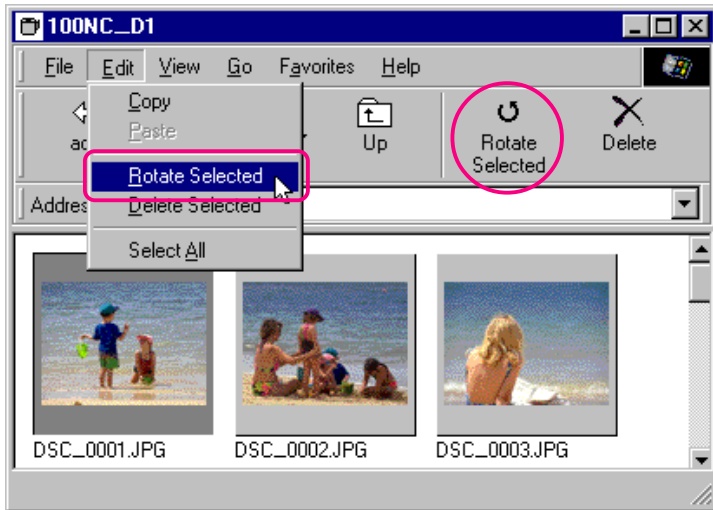
When the entire image does not fit in the image window, you can view the hidden portion by dragging the scroll sliders at the right and bottom of the window, or by clicking the scroll bars or arrow buttons. Alternatively, you can enlarge the window itself by dragging the window's borders.



To close an image window, click the close button () at the right end of the title bar.

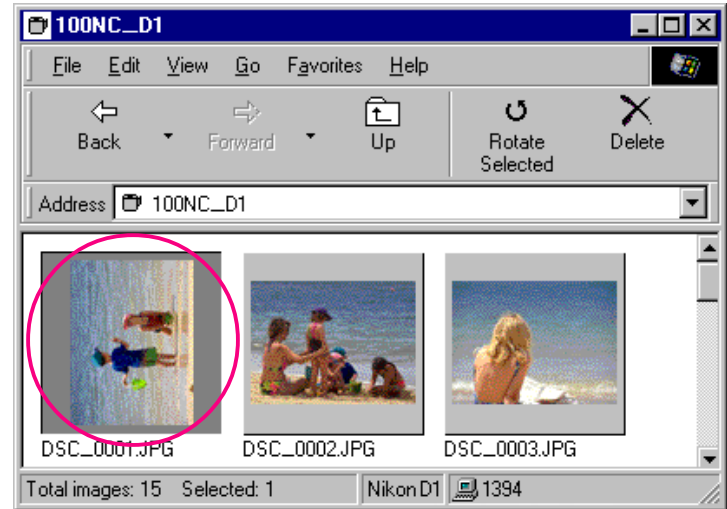
Rotating Thumbnails

Selected thumbnails in the browsing window can be rotated ninety degrees to the left by selecting **Rotate Selected** from the **Edit** menu or clicking the **Rotate Selected** button in the tool bar.



Short-cut: Select the thumbnail with the right mouse button and choose **Rotate** from the right-button menu.

The selected thumbnail is rotated ninety degrees to the left.



Note: Rotations applied to thumbnails in the browsing window have no effect on the images in the camera, or on copies of the image that have already been saved to disk. Rotations are saved if images are copied to disk after having been rotated (rotations applied to NEF images can not be saved).

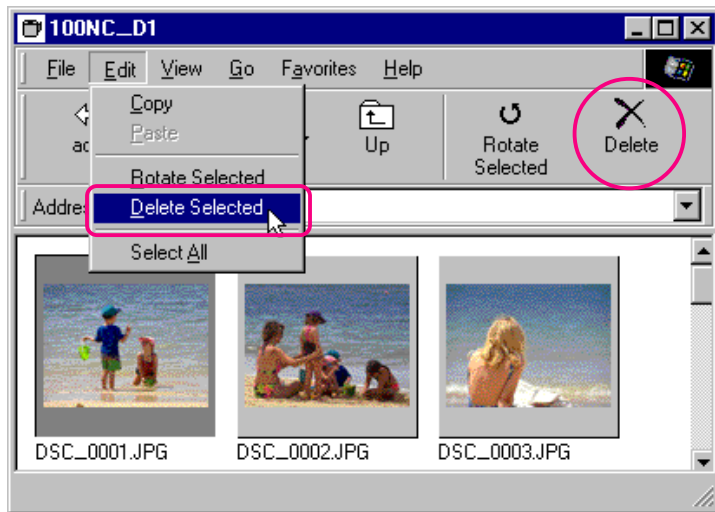
Deleting Images and Folders

Images or folders can be deleted from the camera's memory when no longer needed. Note that images or folders can not be recovered from the Recycle Bin after deletion; be sure to back up any images you would like to keep.

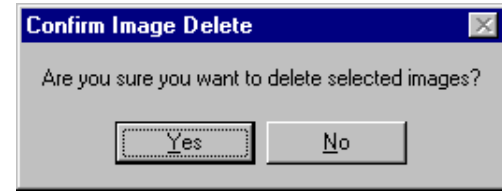
Caution: Images that have been protected using the camera's protect option can be deleted.

Follow these steps to delete selected images.

- 1 Select the images you wish to delete and choose **Delete Selected** from the **Edit** menu, or click the **Delete** button in the tool bar.



A confirmation dialog box will appear.



Short-cut: Delete selected thumbnails by pressing the del key on the keyboard, or click thumbnails with the right mouse button and choose **Delete** from the right-button menu.

- 2 Click **Yes** to delete the selected images. Click **No** to return to the browsing window without deleting the images.

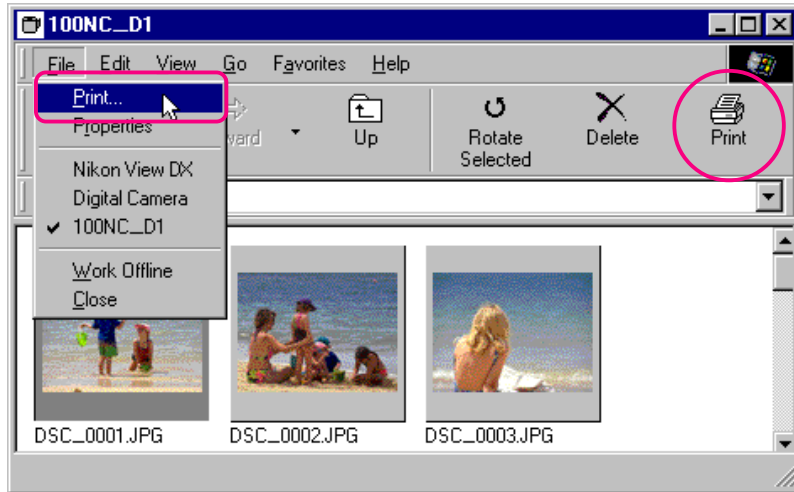
To delete all folders and images stored in the camera's memory (i.e., the compact flash-memory card currently inserted in the camera), select the **Digital Camera** icon and then choose **Format** from the **File** menu, or click on the **Digital Camera** icon with the right mouse button and choose **Format** from the right-button menu.

Printing Images

Nikon View allows you to print selected images or all the images in the browsing window.

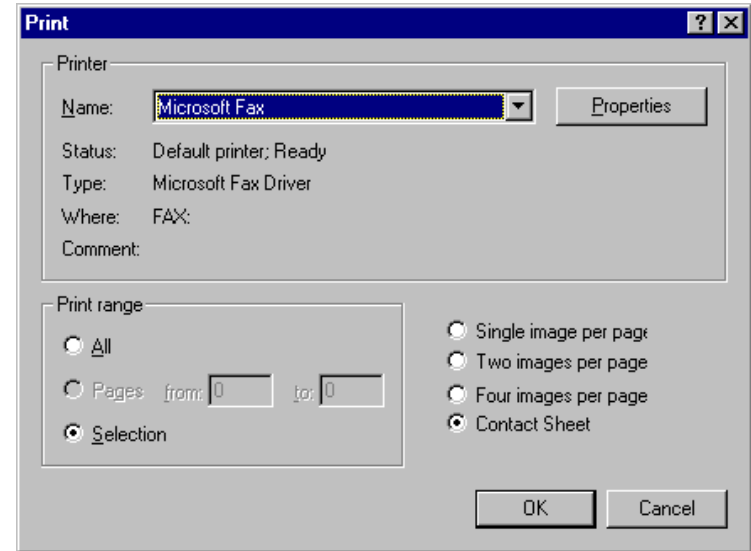
Follow these steps to print selected images.

- 1 Select the images you wish to print and then select **Print...** from the **File** menu, or click the **Print** button in the tool bar.



Short-cut: Select the thumbnail with the right mouse button and choose **Print...** from the right-button menu.

The Print dialog box will appear.



- 2 After making changes to printer settings, click **OK** to print the selected images.



Print dialog box options:

Printer

Name

Gives the name of the active printer. Click the arrow key to the right of the listed printer to bring up a list of the printer drivers currently installed on your system, where you can select a different printer. The type, location, and current status of the selected printer are listed beneath this item.

Properties

Click this button to bring up the Properties dialog box for the selected printer; here you can change paper size and graphics settings. The specific contents of the Properties dialog box depend on the printer selected.

Print range

All

With this command, all the images displayed in the browsing window are printed.

Selection

With this command, only the images currently selected in the browsing window are printed.

Number of images per page

Single image per page

With this command, each image is printed on a separate sheet.

Two images per page

With this command, two images are printed on each sheet.

Four images per page

Select this command to print four images per sheet.

Contact Sheet

This command prints selected images as thumbnails.

OK

Prints the image at the specified settings, and returns you to the browsing window.

Cancel

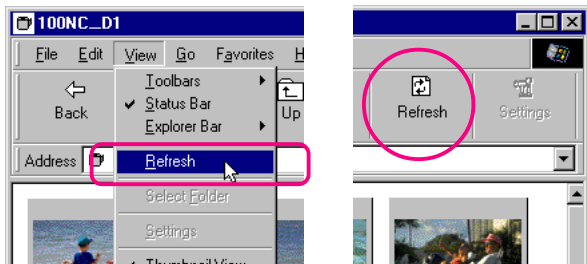
Returns you to the browsing window without printing the image.

Refreshing Thumbnails and Folders

If you take new photographs with the camera in “PC” mode while a list of the images stored in the camera is displayed, the images displayed in the window will be automatically refreshed. If the camera is set to a different mode or is disconnected, the window will not be open, and the contents will be refreshed when you next open the window. If, however, you have replaced a memory card while browsing images with a compact-flash card-reader or card adapter, or if you have added files to or deleted files from the hard disk by some other means while the thumbnail list is displayed, the contents of the window will not be automatically refreshed. In such cases, you can update the window contents as described below.

✓ Caution: Do not disconnect the camera data are being transferred to or from the computer, as this could damage the product.

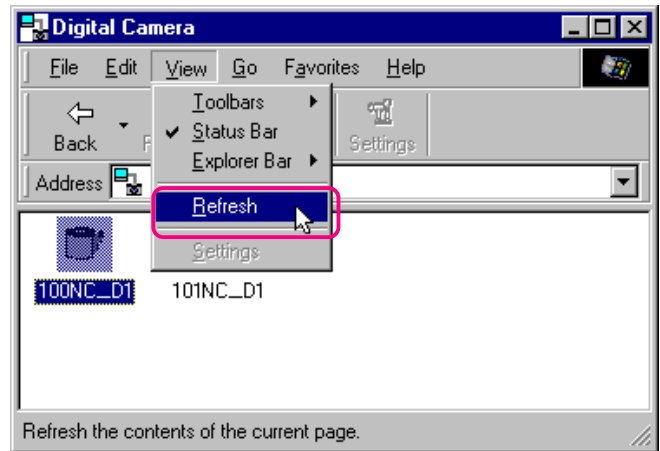
To update the thumbnails, select **Refresh** from the **View** menu or click the **Refresh** button in the tool bar.



Short-cut: Click the right mouse button in an empty area of the window and choose **Refresh** from the right-button menu.

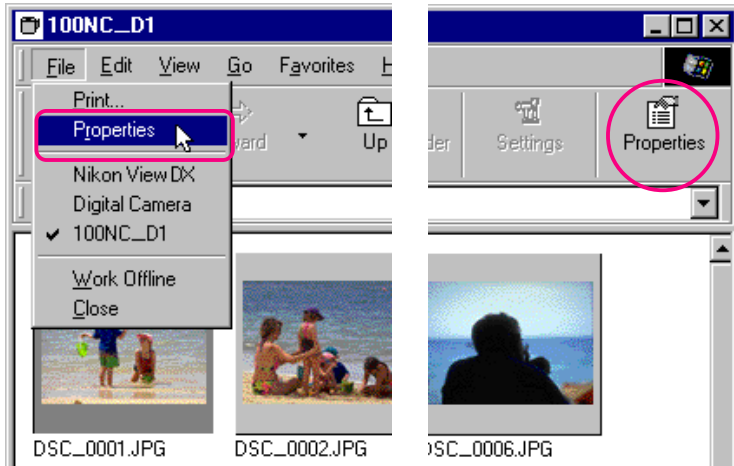
The computer will read the images in the selected medium (the camera if **Digital Camera** is selected, a compact flash-memory card if **Removable Media** is selected, or a specified folder on a disk if **Hard Disk** is selected), and thumbnail previews will be displayed in the window.

You can select **Refresh** from the **View** menu while folders are displayed.



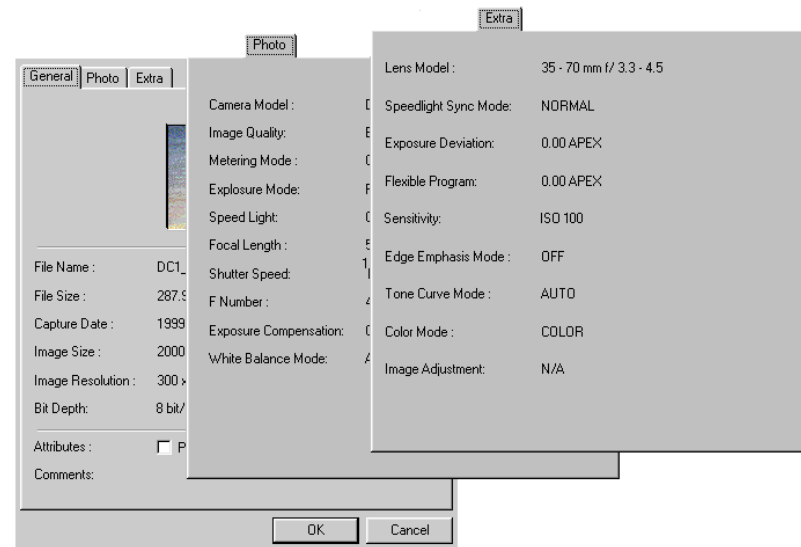
Viewing Image Information

Information on selected images can be displayed. After selecting the thumbnails, select **Properties** from the **File** menu or click the **Properties** button in the tool bar.



Short-cut: Select a thumbnail with the right mouse button and choose **Properties** from the right-button menu.

The Properties dialog box is displayed. The Properties dialog box contains three panels: General, Photo and Extra. You can switch between panels by clicking the tabs at the top of the dialog box.



The General Information panel shows information on the selected image, including file name, file size, capture date, dimensions, and Camera ID (assigned by **Nikon Capture**). You can change the Protect setting for camera playback using the **Attributes** check box. The Photo Information panel contains information on camera settings such as image quality, exposure and flash setting at the time the photograph was taken. The Extra panel contains additional photo information such as exposure compensation, ISO sensitivity and flash synchronization mode settings.

Click **OK** to accept any changes to image attributes and close the Properties dialog box. Click **Cancel** to close the dialog box without changing attributes.

Copying Images to Disk

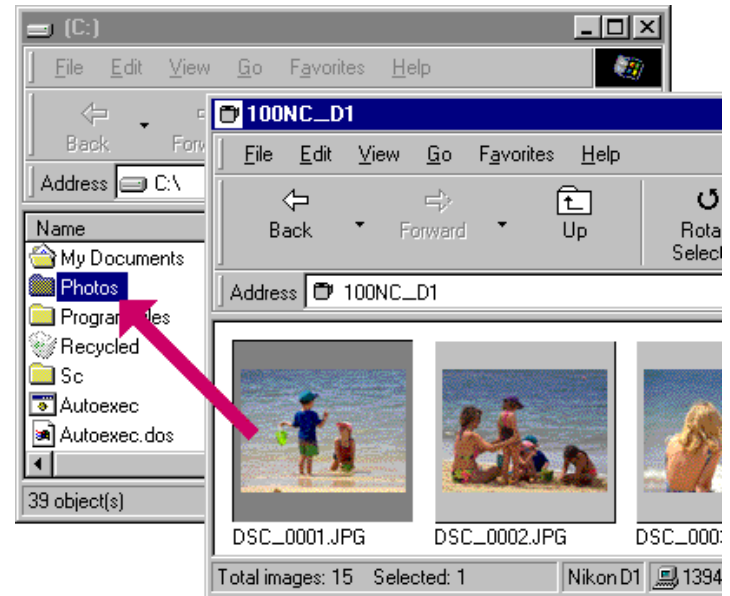
Images in the browsing window can be copied to disk by using drag-and-drop or copy-and-paste. Before copying images to disk, locate or create a destination folder.

Tip

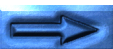
All images taken with the camera are assigned file names beginning with “DSC_0001.JPG (or TIF or NEF).” Likewise, all image files saved in folders in the camera’s memory are assigned file names beginning with “DSC_0001.JPG (or TIF or NEF).” Thus, to prevent overwriting when copying an image to disk, change the filename when you copy an image, or create a new copy folder for each camera folder.

Copying images by drag-and-drop

Select the images you wish to copy by clicking their thumbnails (to select multiple images, hold down the **Ctrl** key on the keyboard while clicking each image), then drag the images to the destination folder and release the mouse button.



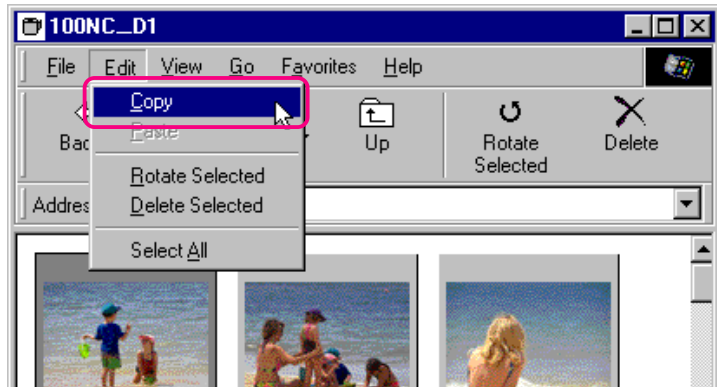
A progress indicator will be displayed while images are copied to disk. Click **Cancel** to abort the operation. Once all images have been copied to disk, the progress indicator will disappear.



Copying images using copy-and-paste

Follow these steps to copy images to disk using copy-and-paste:

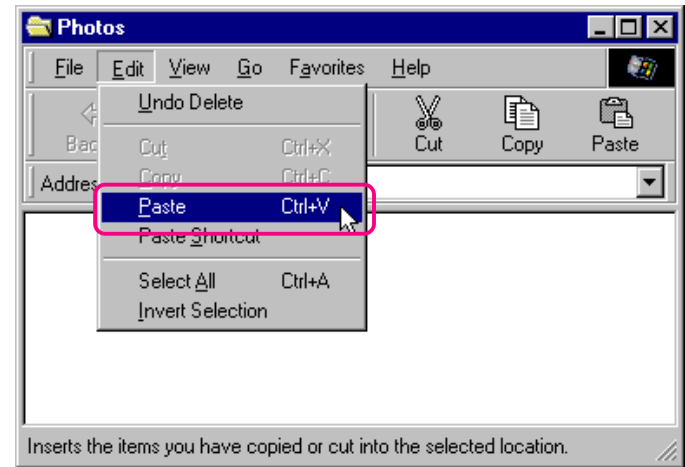
- 1 Select the images you wish to copy by clicking their thumbnails (to select multiple images, hold down the **Ctrl** key on the keyboard while clicking each image in turn), then select **Copy** from the **Edit** menu.



Short-cut: Press **C** while holding down the **Ctrl** key on the keyboard, or click a thumbnail with the right mouse button and choose **Copy** from the right-button menu.

A progress indicator will be displayed while images are copied to the clipboard. Click **Cancel** to abort the operation. Once all images have been copied, the progress indicator will disappear.

- 2 Open the destination folder and select **Paste** from the folder's **Edit** menu.



The selected images will be copied to the destination folder.

Tip

If an image with the same filename has previously been copied to the same location, you will be asked whether you wish to replace the existing file. If you select **No**, a temporary file containing the image data is created in the Windows temporary folder (path “(Windows folder)\Temp\Camexp\Transfer”—the “Windows folder” is the folder to which Windows has been installed). When you copy further files with redundant names to disk, they are saved under names created by adding a number in brackets ([1], [2], [3], [...]) to the filename. This prevents users from accidentally overwriting image files on the computer. If you use this operation repeatedly, however, you may run out of room in the temporary folder. To free disk space, you may wish to delete the contents of this temporary folder periodically.

Opening Images in Another Application

When browsing thumbnails, you can open the associated files in any application that support JPEG (".JPG") or TIFF (".TIF") formats. Images can be opened directly from the application or by drag-and-drop.

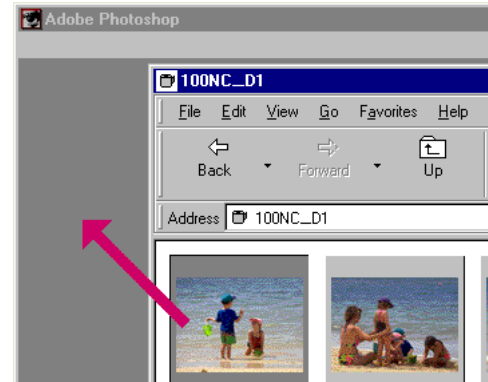
Note: *If you have Adobe Photoshop 4.0 or later and have installed the Photoshop plug-in for TIFF-YCbCr image files, you will be able to open TIFF-YCbCr image files in Photoshop. In the case of Adobe Photoshop 4.0, TIFF-YCbCr images can be opened from the **File** menu. If you have Adobe Photoshop 5.0 or later, you can open TIFF-YCbCr image files by double-clicking the thumbnails in the browsing window.*

Tip

When you open images taken with the camera in another application, a temporary file containing the image data is created in the Windows temporary folder (path:“(Windows folder)\Temp\ Camexp\Transfer”—the “Windows folder” is the folder to which Windows has been installed). If you save the open image using the **Save** command, it is saved in the temporary folder. As repeated use of this operation may fill the temporary folder, you may wish to delete the contents periodically to free disk space. Images can be saved in a different folder using the **Save As...** command; note, however, that in this case a copy of the image before editing will remain in the Windows temporary folder.

Opening image files by drag-and-drop

Images that have been selected in the browsing window can be opened in another application by dragging the thumbnails over an open application window and releasing the mouse button.



The images will be opened in the application.



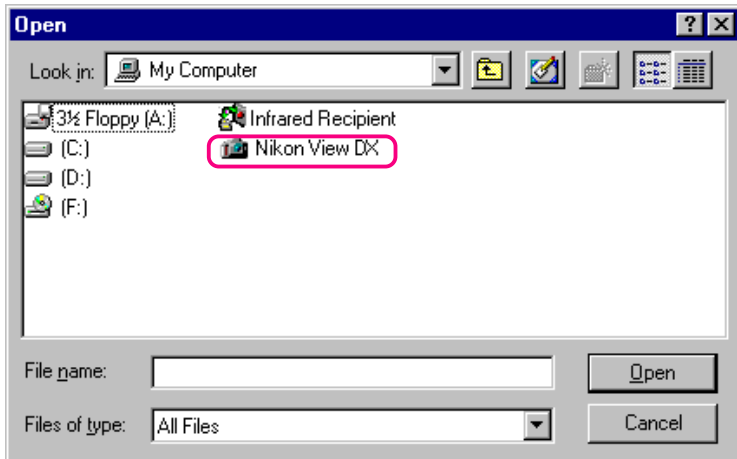
Use the **Save As...** command to save the images in the desired folder.



Opening image files from other applications

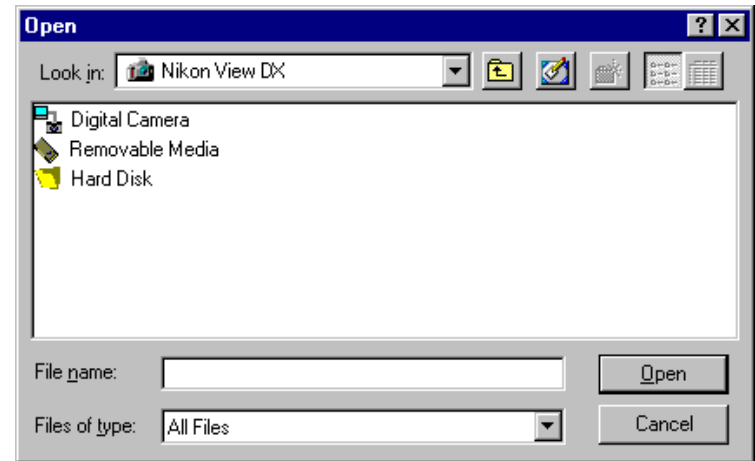
Follow these steps to open images using the application's Open dialog:

- 1 You can open images in another application by selecting **Open...** or **Open File...** from the application's **File** menu.
- 2 In the application's Open dialog box, select **Nikon View DX** from the drives listed under "My Computer" and click the **Open** button.

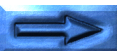


The **Digital Camera**, **Removable Media**, and **Hard Disk** icons will be displayed.

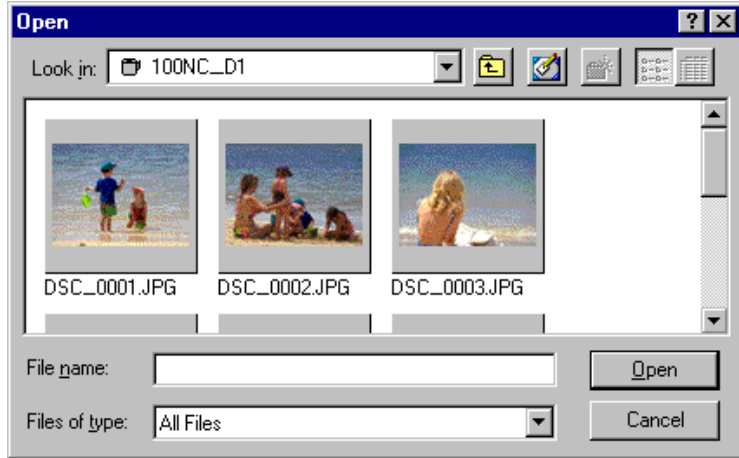
- 3 Double-click the icon representing the medium on which the desired image has been saved.



If you chose **Digital Camera** or **Removable Media**, further folders will be displayed. Selecting **Hard Disk** displays a Select Folder dialog box, from which you can navigate to the desired location.



- 4 Select a folder. Thumbnail previews of the images in the selected folder will be displayed (to change to a list-style display, right-click in an area containing no thumbnails, and select **List View** from the menu).



Note: The dialog box shown above is the standard Windows Open dialog box for 32-bit applications. The contents of the dialog box may vary depending on the application.

- 5 Select the thumbnail you wish to open and click **Open**. The selected image will be opened in a window within the application.

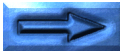
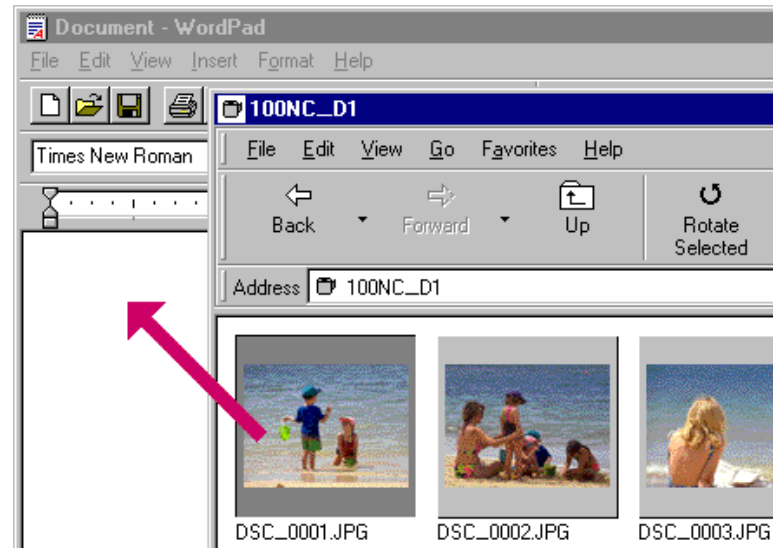
Use the **Save As...** command to save the images to the desired folder.

Inserting Images into Documents

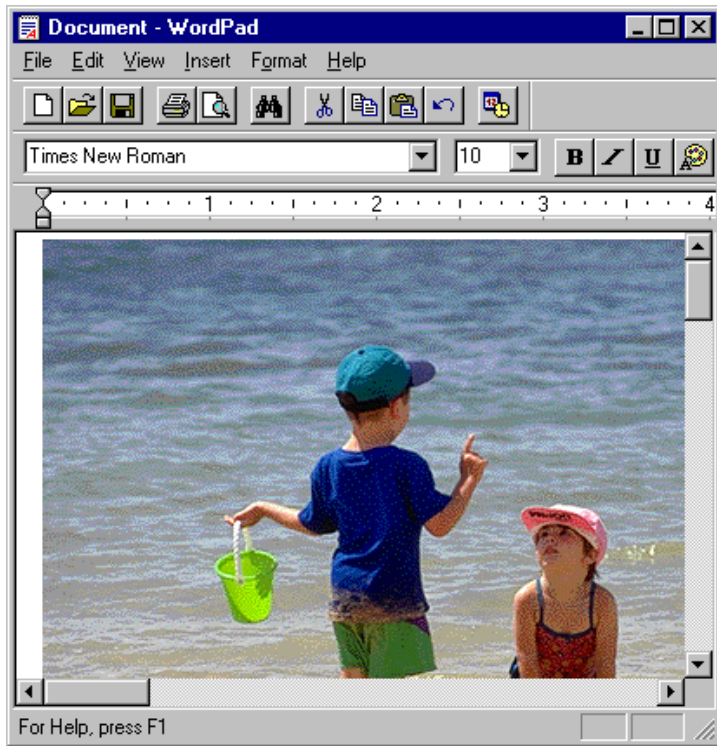
Nikon View supports OLE 2.0, which allows you to insert images taken with the Nikon D1 digital camera into documents created by any OLE 2.0 application that supports the JPEG (".JPG") or TIFF (".TIF") formats. Images can be inserted into documents directly using drag-and-drop or cut-and-paste, or embedded using the application's **Insert object** command.

Inserting images by drag-and-drop

Drag the desired thumbnail over an open document window in the other application.



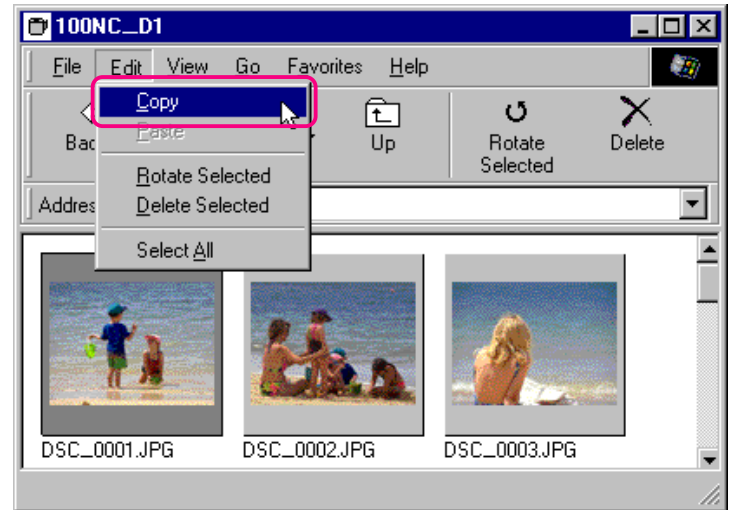
If the application supports OLE 2.0, the image will be inserted in the document as shown below.



Note: *TIFF-YCbCr image files are different from normal TIFF image files. If you would like to work with TIFF-YCbCr image files, check that the application software you are using supports this type of file. TIFF-YCbCr images can be opened in Adobe Photoshop 4.0 or later if you have installed a plug-in for the YCbCr TIFF format. Nikon Capture is required to open NEF files containing raw image data from the camera's CCD.*

Inserting images using copy-and-paste

In the browsing window, select the image you wish to insert and select **Copy** from the **Edit** menu.



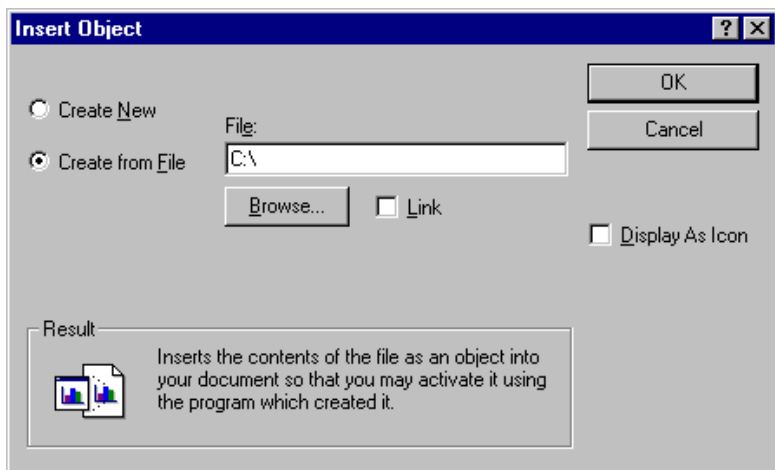
Next, open the destination application to the document window into which the image is to be inserted. After positioning the cursor in the desired location, select **Paste** from the application's **Edit** menu to paste the image into the document.



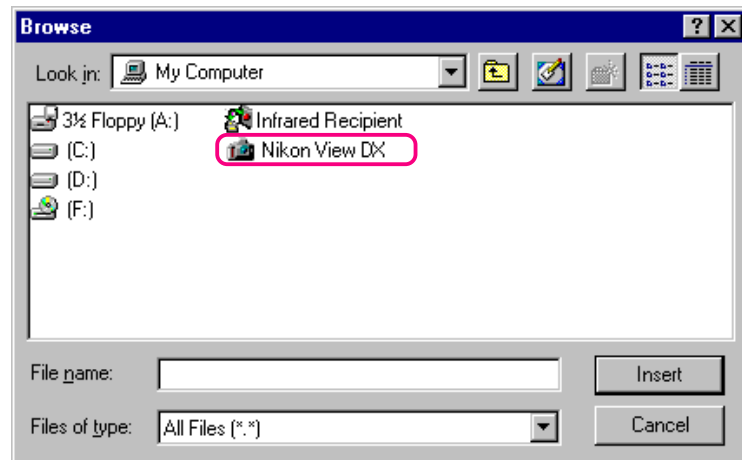
Inserting images using the insert object command

In applications that support OLE 2.0, images can be inserted in documents using the application's "insert object" option. Follow these steps to insert images using the "insert object" option.

- 1 In the Insert Object dialog box, choose **Create from File**, and then click **Browse...**.



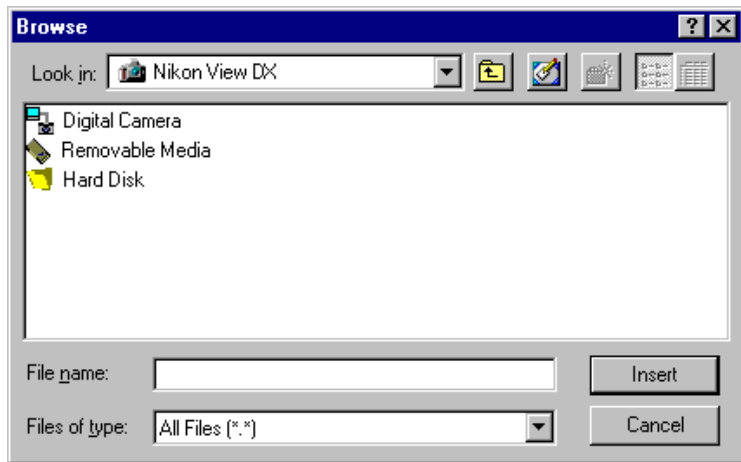
- 2 In the Browse dialog box, select **Nikon View DX** from the drives listed under **My Computer** in the **Look in** pop-up menu, and then click **Insert**.



The **Digital Camera**, **Removable Media**, and **Hard Disk** icons will be displayed.

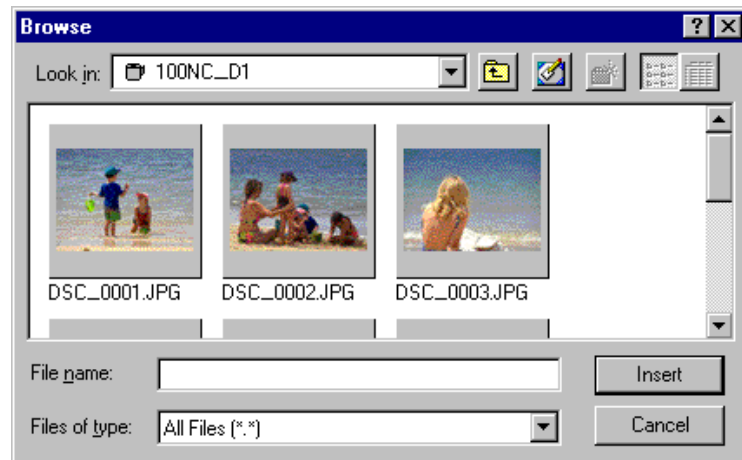


- 3 Double-click the icon of the medium where the desired image is saved.



If you chose **Digital Camera** or **Removable Media**, further folders will be displayed. Selecting **Hard Disk** displays a Select Folder dialog box, from which you can navigate to the desired location.

- 4 Select a folder. Thumbnail previews of the images in the selected folder will be displayed (to change to a list-style display, right-click in an area containing no thumbnails, and select **List View** from the menu).



- 5 Select the image you wish to insert and click the **Insert** button to return to the Insert Object dialog. Click **OK** to insert the selected image in the document.

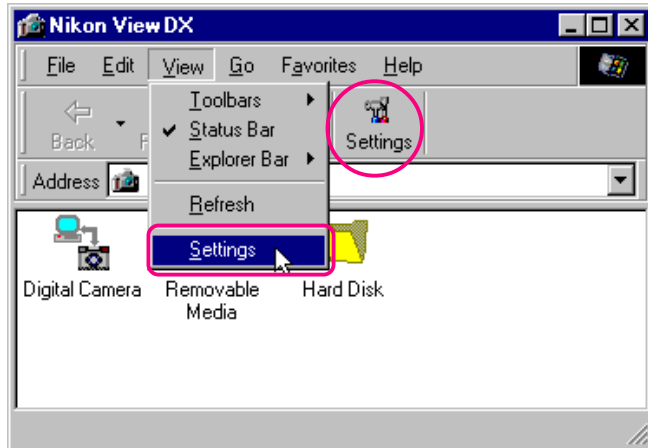
Preference

This chapter covers connection port and data transfer rate settings adjustment.

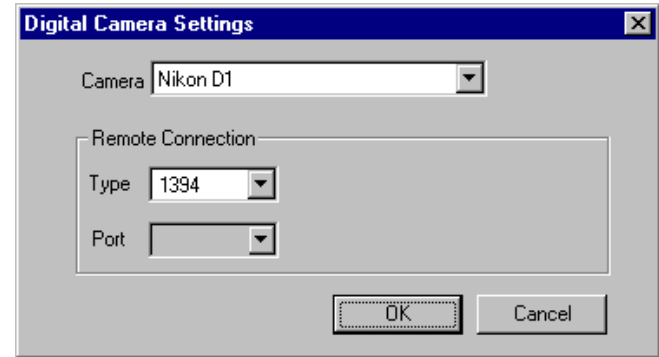
Selecting the Camera to be Connected

Follow these steps to change settings:

- 1 In the Nikon View DX window, select **Settings...** from the **View** menu, or click the **Settings** button in the tool bar.



The Digital Camera Settings dialog box will be displayed.



- 2 Make the desired changes to settings and click **OK**.

Digital Camera Settings dialog box options:

Camera

The name of the camera currently connected is displayed.
The only option available is “Nikon D1.”

Remote Connection

Type

The only available port type is “1394.”

Port

This port speed control can not be used.



Note: *If you have the Nikon View software for the Nikon CoolPix series of digital camera installed on the same computer system, you can select “Nikon CoolPix” as the camera to be used in the Camera drop-down list. If “Nikon CoolPix” is selected, the only available port type in the Type drop-down list box will be “serial”, but the Port and Speed settings can be changed as desired. You can select the communications port from among “AUTO”, “COM1”, “COM2”, “COM3” and “COM4”, and you can set the communication speed to either “115200” or “19200”. These settings are only supported when the camera connected is compatible with Nikon View Ver 2. For further details, refer to the Nikon View Ver 2 documentation.*

OK

Accepts any changes to settings and closes the Digital Camera Settings dialog box.

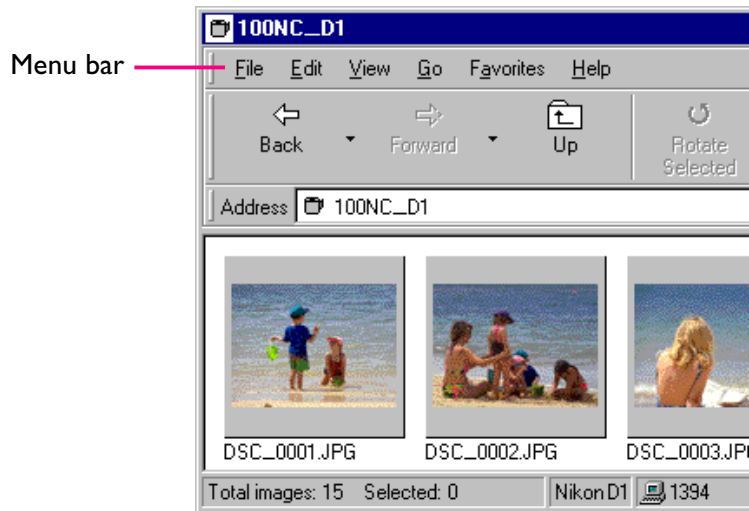
Cancel

Closes the Digital Camera Settings dialog box without changing settings.

This chapter provides a brief reference guide to *Nikon View*'s menu bar and toolbar. Refer to this guide when you want to know the meaning of a command or button.

The Menu Bar

When you browse images in *Nikon View*, *Nikon View* commands are added to the standard Windows menu commands. The commands available in each menu are outlined below.

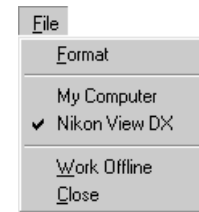


The File Menu

Browsing window



Nikon View DX window



Print...

Allows you to print the currently selected image to a printer that you specify. You can also access this command by clicking the **Print** button in the tool bar.

Properties

Displays the properties for the selected image in the Properties dialog box. You can also access this command by clicking the **Properties** button in the tool bar.

Format

Initializes the camera's memory (the compact flash-memory card currently inserted in the camera).

Work Offline

Allows you to work offline.

Close

Closes the Nikon View window, terminating your *Nikon View* session. You can also quit the program by clicking the close button (x) at the right end of the title bar.



The Edit Menu

Browsing window



Digital Camera window



Copy

Copies the selected image to the clipboard. The image can be pasted into another folder or application using the paste command.

Paste

This command is unavailable in the browsing and Digital Camera windows.

Rotate Selected

Rotates selected images ninety degrees, counter-clockwise. You can also access this command by clicking the **Rotate Selected** button in the tool bar.

Delete Selected/Delete

The selected image or selected folder is deleted from the medium currently being browsed. You can also access this command to delete the selected image(s) by clicking the **Delete** button in the tool bar.

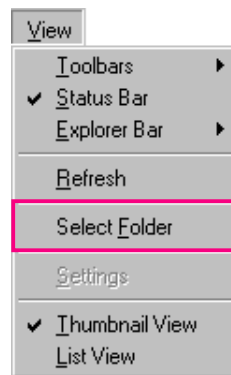
Select All

Selects all the images for copying, printing, or deletion.

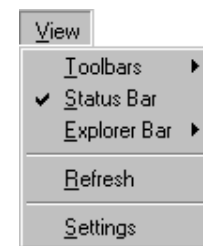
The View Menu

Commands available in the **View** menu vary depending on the active window.

Browsing window



Nikon View DX window



This command can only be used in the Hard Disk window.

Toolbars

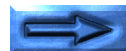
Choose this command to determine the type of toolbar that will be displayed.

Status Bar

Choose this command to display the status bar at the bottom of the Nikon View DX window.

Explorer Bar

Choose this command to determine the type of Explorer bar that will be displayed.



Refresh

Updates the images in the active window. You can also access this command by clicking the **Refresh** button in the tool bar, or select it from the **View** menu while folders are displayed.

Select Folder

Displays the Browse for Folder dialog box, allowing you to select the folder containing the images you want to browse. You can also access this command by clicking the **Select Folder** button in the tool bar. This command may only be used when browsing images in the Hard Disk window.

Settings...

Displays the Camera Settings dialog box, where you can select the camera to be connected. You can also access this command by clicking the **Settings** button in the tool bar. This command can be used in the Nikon View window.

Thumbnail View

Displays the images as thumbnails. You can also access this command by clicking the **Thumbnail View** button in the tool bar.

List View

Displays the images as a simple list, without thumbnails. You can also access this command by clicking the **List View** button in the tool bar.

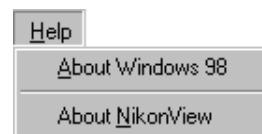
The Go Menu

A standard Windows menu. Refer to your Windows manual for details.

The Favorites Menu

A standard Windows menu. Refer to your Windows manual for details.

The Help Menu



About Windows 98

Displays Windows 98 version information.

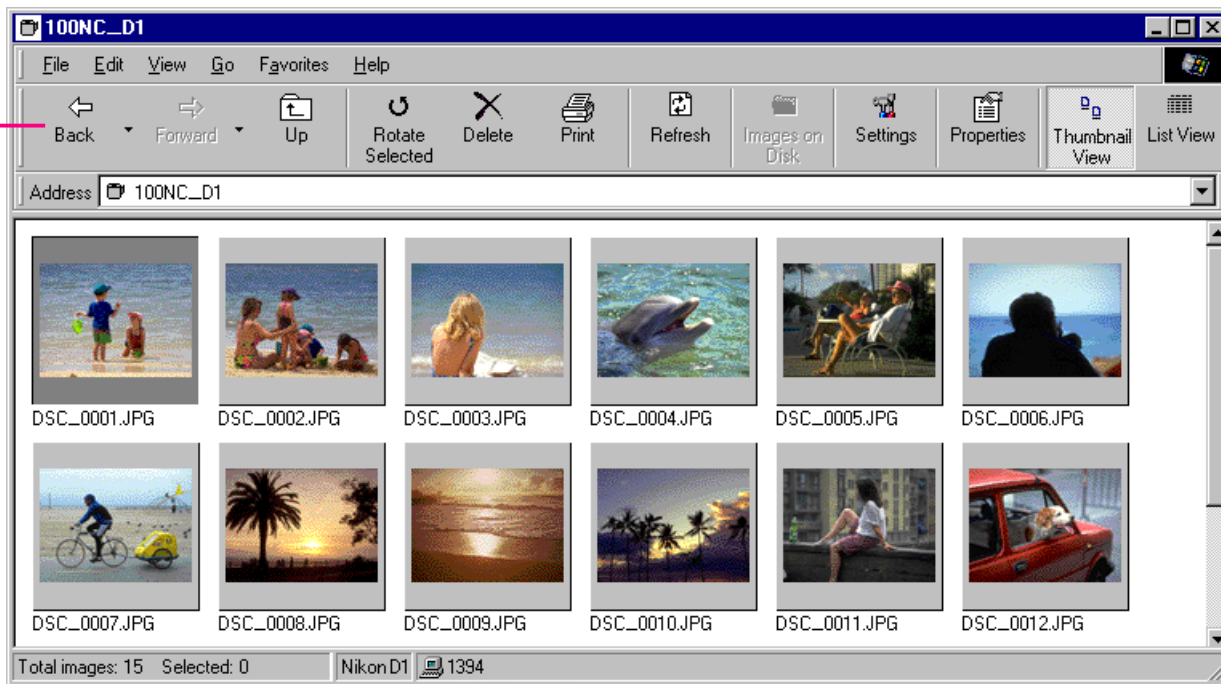
About NikonView

Opens the “About NikonView” dialog, which gives copy-right information for the program.

The Toolbar

The buttons in the toolbar can be used to manage images in the browsing window and perform a variety of other operations.

Tool bar



Tip

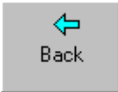

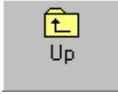



Enlarge the window in order to view all of the command buttons in the tool bar. When you locate the cursor on the window frame, it changes into a double arrow. Drag the frame to enlarge the window.



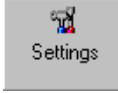
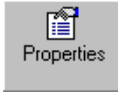


Tip

Depending on the resolution of your display, the tool buttons at the right of the toolbar may not be visible, even when you maximize the image to fill the screen. In that case, open the **Toolbars** submenu from the **View** menu and select **Text Labels** to change to small tool buttons without text labels (a pop-up label explaining the button's function can be displayed by resting the mouse pointer on the button for a few seconds).



The commands accessible from the tool bar are outlined below.

Button	Function
 Back	Return to the previous window.
 Forward	Proceed to the next window.
 Up	Open the folder one level up in the file hierarchy (in the case of the “Nikon View” folder, the “My Computer” folder).
 Rotate Selected	Rotate the selected images 90° to the left.
 Delete	Delete the selected images. Clicking this button displays the Confirm Image Delete dialog box, where you can choose to permanently remove the chosen images from the currently selected medium.
 Print	Print the selected images. Clicking this button displays the Print dialog box, allowing you to print selected images to a printer of your choice.

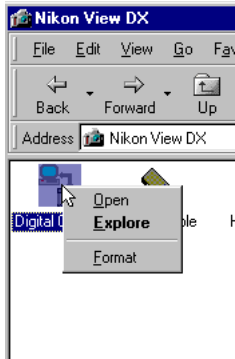
Button	Function
 Refresh	Updates the images in the window.
 Select Folder	Displays the Browse for Folder dialog box, allowing you to select the folder containing the images you want to browse. This command may only be used when browsing images in the Hard Disk window.
 Settings	Lets you use the Camera Settings dialog box to select the camera to be connected. This command can be used in the Nikon View DX window.
 Properties	Displays the Properties dialog for the selected image.
 Thumbnail View	Displays the images as thumbnails.
 List View	Displays the images as a simple list, without thumbnails.

The Right-Button Menus

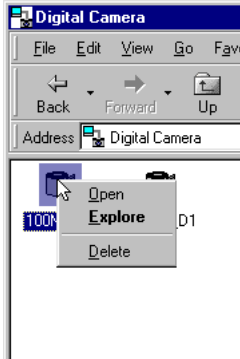
You can use right-button menu commands to perform a variety of operations, including as Preview, Copy, and List View.

Click a thumbnail with the right mouse button to select the image and display a menu of command short-cuts.

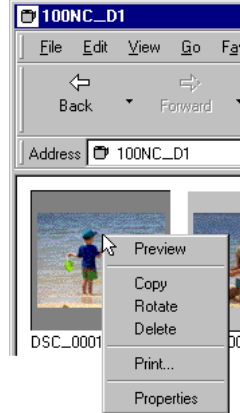
Digital Camera window



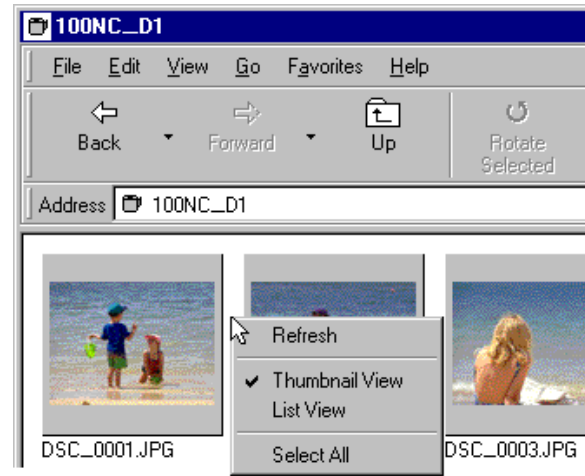
Nikon View DX window



Browsing window



Clicking the right mouse button in an empty part of the window displays the menu shown below.



Note: You can use the **Select Folder** command when browsing images in the Hard Disk window.

These menus allow quick access to the commands in the menu and tool bar.

Tip

You can use right-button menus with the open dialog for images opened in other applications, and with the Browse dialog when you insert images (right-button menus are available only in the standard Windows dialog box for 32-bit applications).